

# Whānau Newsletter

## Term Two 2026



### Welcome to Term Two Whānau



Welcome back to those who have been with us previously and a warm welcome to all of the new families that are joining us this term. We are looking forward to introducing you to our McKenzie Centre whānau.

### Dates for Term 2, 2026

20 April	Term 2 starts
27 April	Public holiday: Anzac Day Observed
4-8 May	Parent Focus (week 3)
12 May	Emergency Drills
17 May	Hangout
1 June	Public holiday: King's Birthday
3 July	End of Term 2
20 July	Start of Term 3

### Staff updates

The first term has been busy with our new team getting settled. There has since been one more addition to our team at McKenzie Centre and some extensions of hours to current times. Please give a warm welcome to our new occupational therapist Samantha Nowland.

Kia ora, my name is Sammy and I have recently joined the team as an Occupational Therapist. You may have seen my face around as I worked as an ESW for the past year.



I took some time away from practicing to have my family and work within our building business with my husband. Outside of work I have four young children and a dog who keep me busy. You will find me here Tues-Fri, and I'm very excited to meet you and your Tamariki during your time at McKenzie Centre.

Jess, Missy and Laura's hours have been extended so you will see them around more often. Maria has gone on maternity leave.

We also extend a warm welcome to our new Education Support Workers Grace, Ruby, Shayna, Rachel and Tasha.

## Term Hangout:

Tuakana Shanayd and Emma:



Bring Your Best Hair-Do!

Looking for a fun way to spend your Sunday morning? Join us for our Term Hangout on May 17th at 11 am! The theme is Wacky Hair Day, so get creative and come with your craziest, most colourful creation. It's all about having a laugh, sharing some kai, and connecting with our wonderful community of families. We can't wait to see what you come up with!



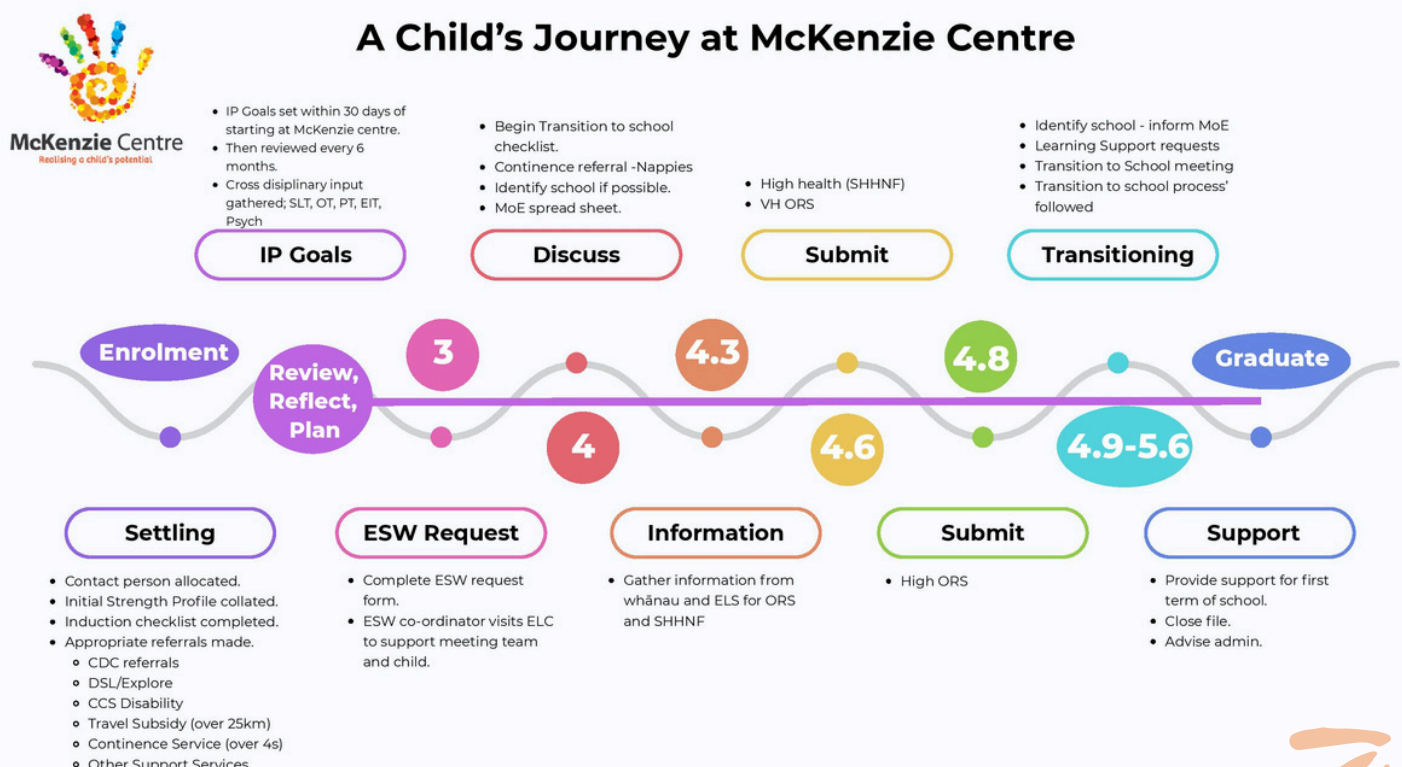
## Curriculum updates and areas of focus for Term 2

As a team, we enjoy meeting the diverse learning needs of McKenzie Centre children. At the beginning of each term, we plan together as a team to formulate goals for each McKenzie Centre session.

This term you will find a concentrated focus on group participation in Music/Circle time, increasing the variety of communication options and opportunities available in session times. The second curriculum focus is towards promoting engagement in reciprocal and interactive play in sessions. The third focus is centred around emotional regulation strategies for both whānau and tamariki.

Workshops this term are going to be decided from requested topics from feedback that occurred last year and in Term 1.

Please bring kai and a water bottle for your child's morning tea, to be enjoyed at a time that suits you during the session.



## Sign IN and OUT every session

We encourage you to stay for the full session. There are a lot of important learning opportunities for you and your child. Please sign in on arrival, and out when you leave, as this is an early childhood licensing requirement from the Ministry of Education.



## Group Participation

Within each session, we hold a music group time for whānau and children to gather and participate in songs and games. The aim of this is to introduce a supported routine for your child. By being involved in the music routine your child builds experiences that are similar to what they may encounter in learning environments e.g., early childhood and school settings. The group music time provides learning in many areas of development e.g. communication, movement, social communication.

## Health and Safety at McKenzie Centre

### Emergency drills:

We practice fire and earthquake drills in session and lockdown drills with the staff only. These drills are practised every three months. All drills will occur on May 12th this term. This is an early childhood licensing requirement so we are all prepared should an emergency event occur. If you are unsure what to do, please talk with the staff.

### Medication:

If you are bringing any medication, including Paracetamol, Disprin etc. into McKenzie Centre, please leave it in the office for safe keeping. Little fingers can get into bags left unattended.

### Allergies:

Please let us know if your child has any allergies (food and other) so that we can adjust our planning around safety. Many of you have done this as part of the enrolment procedure but let us know if there are any changes.

## Changes to attendance

If you have or would like to make changes to the day that you attend McKenzie Centre, please talk with your contact person and have a chat with Henny in the office. We also need to know if your child's enrolment days/hours at Early Childhood Education Centres have changed as this affects funding claims.

## Loan Items

Please remember to bring back any toys or items that your whānau borrowed. If you're still using them, please touch base with your contact person.



## Early Intervention Fees

Eftpos: We have an Eftpos machine at McKenzie Centre, so you can make payments when you are here. Please see Henny or Lillian who are happy to help you. Thank you for supporting McKenzie Centre with your payment of the Early Intervention Fees. They are essential to the running of our service. The WINZ Childcare Subsidy is available for many families and may cover the entire cost of the Early Intervention Fee. We can help you apply for this, or find another option for you, so that your financial burden is eased. Please see your contact person or the Admin team – we are happy to help. Some people pay us a smaller amount every week – talk to Henny or Lillian and they will help you with this.

If you're a MSD/Work and Income client, you can apply for Childcare Subsidy using RealMe on the SmartStart website. Or if you prefer, you can continue to apply through MyMSD or on paper.

## Policies and Procedures

All policies and procedures are on a review cycle, so they always remain current and relevant. A full list is available in the yellow "Licence, Policies, ERO Report" folder in the Whānau Room.

The Licensing Criteria for Early Childhood Education & Care Services was recently updated. Many of our policies and procedures have been updated to reflect this. They will be available for review during Parent Focus week this term.

They are all listed on the wall in the Whānau Room and families' opinions are an important part of this review process. If you want to know more about any policy, procedure or how they are reviewed feel free to ask Lillian.

## Thanks So Much To All Our Volunteers & Sponsors

We are very grateful to the many people and organisations that support McKenzie Centre and the work we do. We could not do what we do without you.



**Best wishes from:** Siobhan, Steph, Rachael S, Henny, Lillian, Emma, Nikki A., Rachael F, Richard, Susie, Eram, Victoria, Siobhan, Shanayd, Emma Gr, Liesl, Chrissy, Michael, Muriel, Maria, Nikki C, Jess, Ella, Laura, Journie, Nick, Missy and Sammy.